



www.bra.org  
800.265.9799

# PURE RECYCLING



## RECYCLE ONLY PRINTED PAPERS AND PACKAGING Loose in your Recycling Bin

### Paper



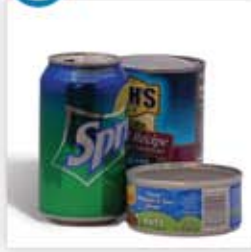
Printed Paper  
loose

### Boxes



Boxes and  
Cardboard  
flatten

### Cans



Aluminum and  
Steel Cans  
empty and rinse

### Plastics



Kitchen, Laundry,  
and Bath:  
Bottles&Containers  
empty and replace cap

### Glass



Bottles and Jars  
empty and rinse

# Sort Trash Out Please!



No Garbage  
Please



No Needles  
and/or  
Hazardous Materials



No Food, Liquid,  
or Organic Materials  
(empty all containers)



No Clothing  
or Linens  
(use donation  
programs)



No Tangles  
(no hoses, wires,  
chains, or electronics)

**Do not include any items just because they are made or contain paper, metal, plastic or glass.**

Let's keep our recyclables clean and pure. For more information call us or visit our website.